

GR705-A1 2844 Approx. 1173 Sq. Ft.

Opt. transom window(s) available  
with opt. 9' flat ceiling only

S = Std. 4" staggered cabinet / opt 12" staggered

M32 = Opt. 32" Millennia lav base

Birch

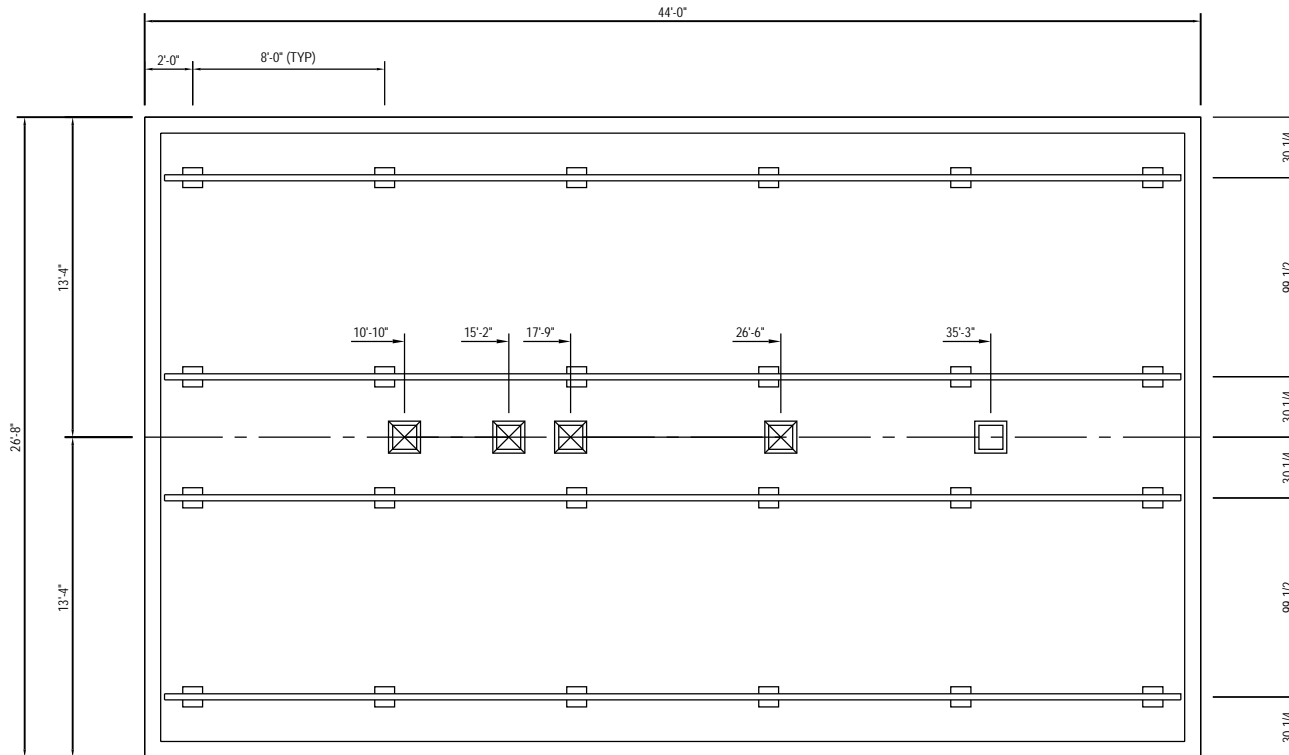
FOOTING SIZE BASED ON 2500 PSF	
FOOTING SIZE	SIZE MAX. LOAD (LBS.)
16"x16"x6"	4.3K
20"x20"x8"	6.7K
24"x24"x10"	9.6K
30"x30"x12"	14.8K
36"x36"x14"	20.7K

**COLUMNS & FOOTINGS MUST BE RATED TO MEET THE CENTER LINE LOADS LISTED**

GROUND SNOW LOAD  
**30 PSF**

BALANCED ROOF LIVE LOAD: XX PSF

FOUNDATION SHOWN MUST BE DESIGNED BY OTHERS TO THE SITE CONDITIONS. THIS INCLUDES SEISMIC DESIGN AND ATTACHING THE HOME TO THE FOUNDATION, ALONG WITH RESISTANCE TO LATERAL, LONGITUDINAL SHEAR, UPLIFT AND DOWNLIFT FORCES IN BOTH DIRECTIONS.



- CRAWLSPACE NOTES -

1. CRAWLSPACE MUST BE VENTILATED PER IRC 408.1 AND IRC 408.2 (ONE VENTILATING OPENING TO BE WITHIN 3' OF EACH CORNER OF BUILDING. 1 SQ. FT. PER EACH 150 SQ FT OF FOUNDATION AREA). VENTILATION IS NOT REQUIRED WITH CONDITIONED AIR. REFER TO IRC 408.3 FOR REQUIREMENTS.
2. WIDTH DIMENSIONS SHOWN INCLUDE A 3/4" ALLOWANCE PER HOME SECTION FOR HOMES WITH FACTORY-INSTALLED O.S.B. ON THE MARRIAGE WALL MATE LINE. THIS ALLOWANCE TAKES INTO ACCOUNT THE 7/16" O.S.B. MATERIAL INSTALLED ON EACH MARRIAGE WALL PLUS ALLOWANCE DUE TO OTHER FACTORS. IF HOME DOES NOT INCLUDE O.S.B. ON THE MARRIAGE WALL MATE LINE, FOUNDATION WIDTH IS TO BE SIZED EQUAL TO ACTUAL MANUFACTURED FLOOR WIDTH. LESSER DIMENSION, IF SHOWN, INDICATES ACTUAL FLOOR WIDTH. THESE DIMENSIONS DO NOT ALLOW FOR ANY VARIANCE THAT MAY OCCUR IN SITE INSTALLATION SUCH AS GAPPING, OFF CENTER SET OR OTHER FIELD-ENCOUNTERED VARIABLES. ANY ADJUSTMENTS NEEDED IN FOUNDATION WIDTH DUE TO SUCH VARIANCES ARE AT THE DISCRETION OF THE INSTALLER.
3. REFER TO INSTALLATION INSTRUCTIONS FOR ALL OTHER INFORMATION NOT COVERED BY THIS DRAWING. INSTALL PIER AND FOOTING AT EACH CORNER OF SIDEWALL WALK-OUT BAY WINDOW UNITS, CONCRETE COMPRESSIVE STRENGTH (FC): 2500 PSI MINIMUM.
4. FOR DEVIATIONS &/OR OTHER FOUNDATION DESIGNS CONSULT A LOCAL PROFESSIONAL ENGINEER & YOUR LOCAL BUILDING OFFICIAL.
5. FOUNDATION CONSTRUCTION AND TIE DOWN REQUIREMENTS FOR HOMES LOCATED IN 100 MPH OR LESS WIND ZONES MAY USE IRC GUIDELINES.

Builder: Commodore Homes of Indiana

Title: 2844 Foundation

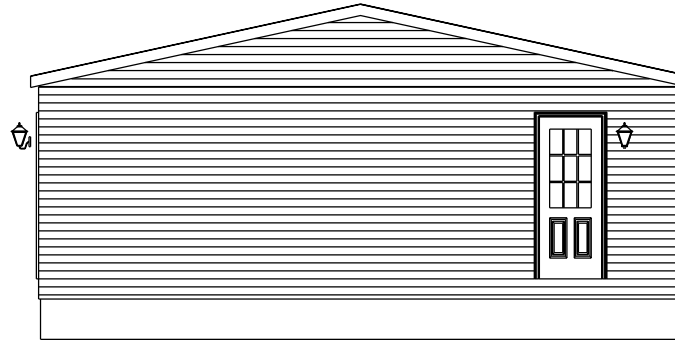
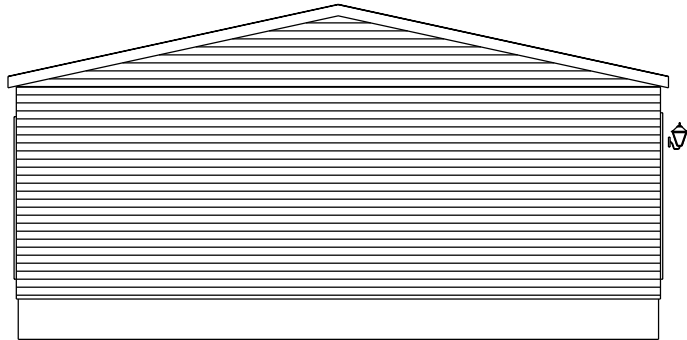
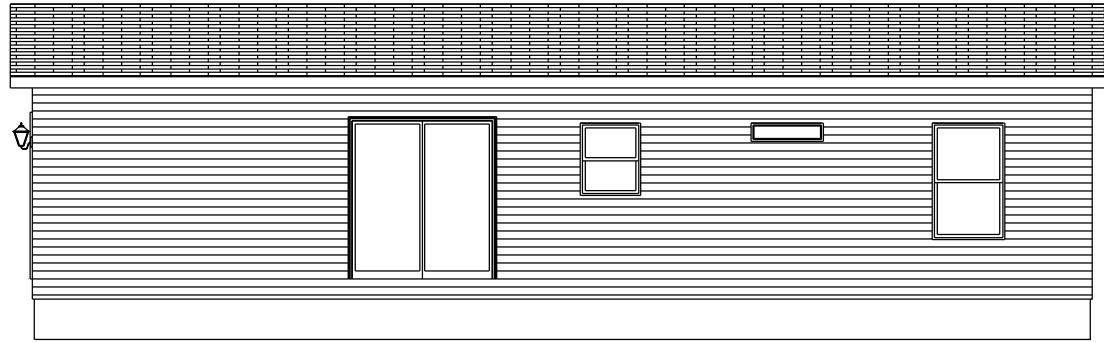
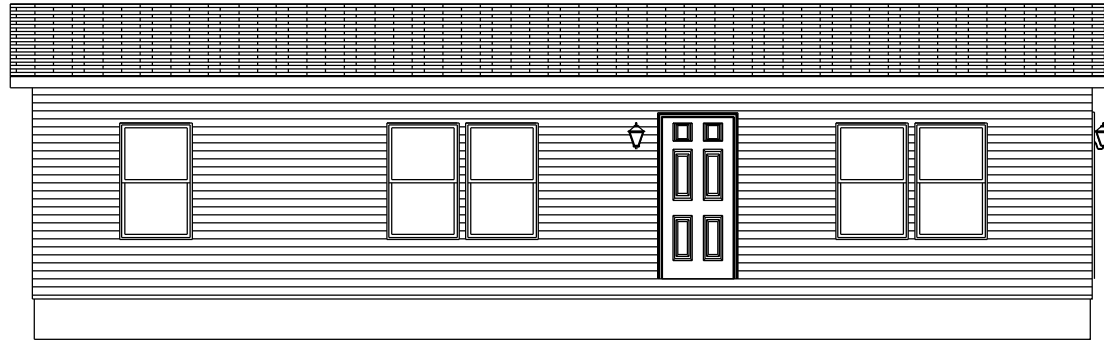
Revisions	
Date	Number

Scale: 1/8" = 1'-0"  
Drawn By: JS

Date: 2/10/2010  
Reference: #####

Cust: -  
Dir: -  
S/N: .

Model/Eng. No.: GR705-A1  
Pg.:



Builder:  
Commodore Homes of Indiana

Title: 2844  
Elevation

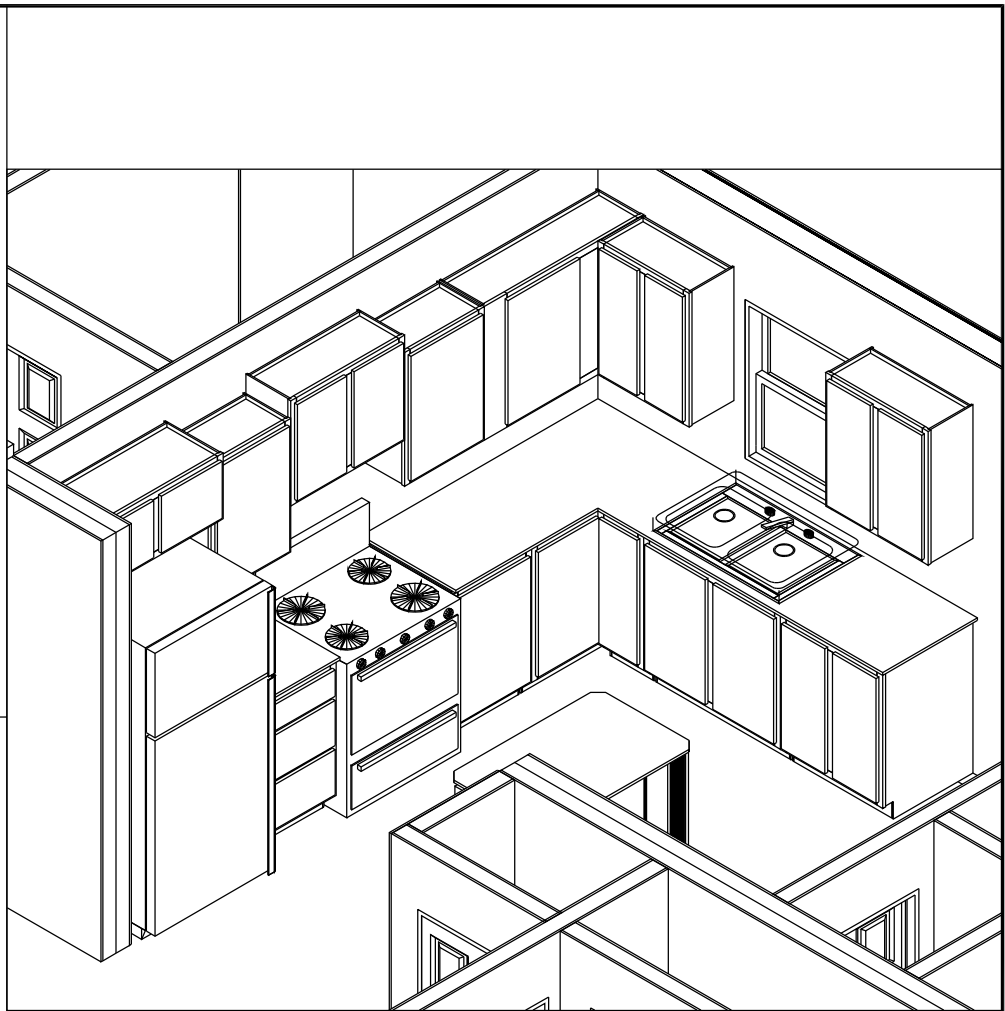
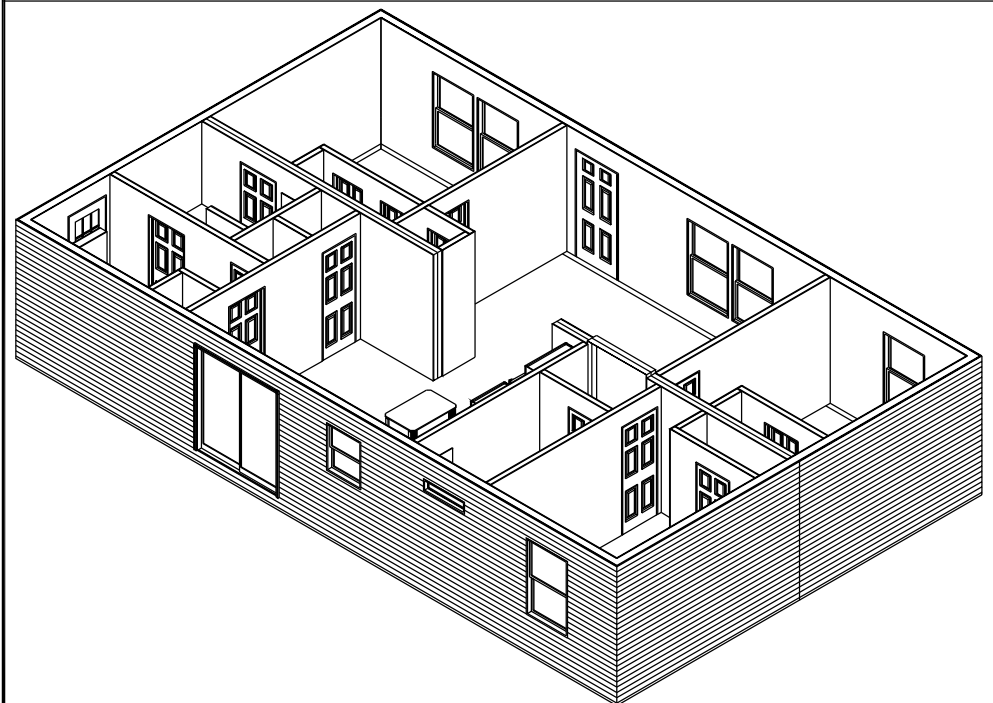
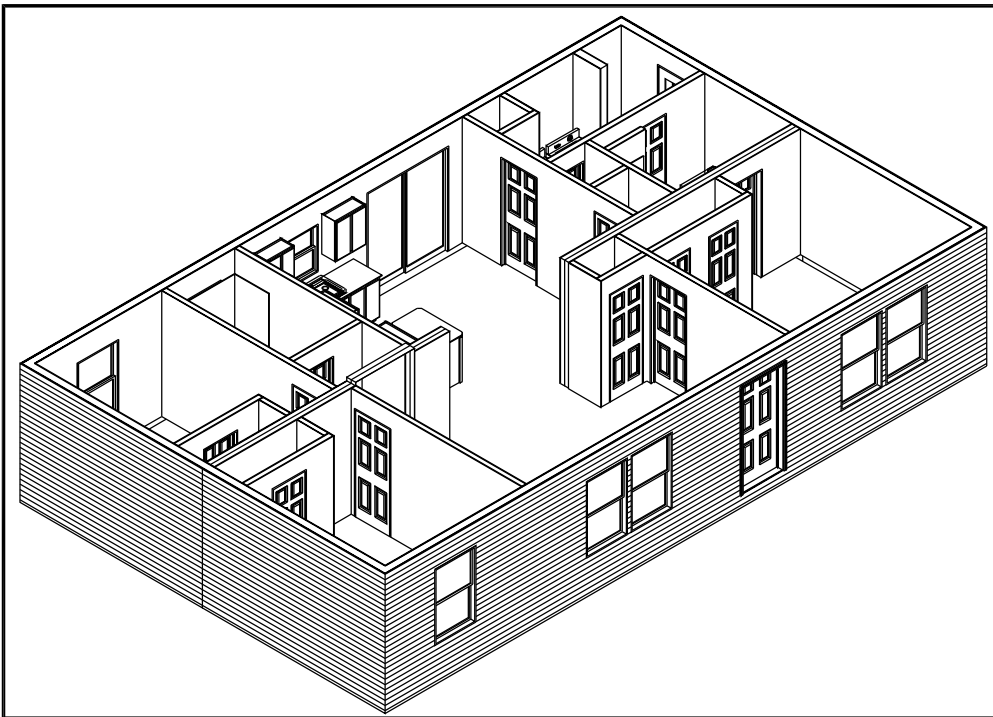
Revisions			
Date	Number		

Scale:  
1/8" = 1'-0"  
Drawn By:  
JS

Date:  
2/10/2010  
Reference:  
###

Cust: -  
Dir: -  
S/N: .

Model/Eng. No.:  
**GR705-A1**  
Pg.: ----



Builder: Commodore Homes of Indiana

Title: 2844  
Isometric

Revisions	
Date	Number

Scale:  
Drawn By:  
JS

Date:  
2/10/2010  
Reference:  
####

Cust: -  
Dir: -  
S/N: .

Model/Eng. No.:  
**GR705-A1**  
Pg.: